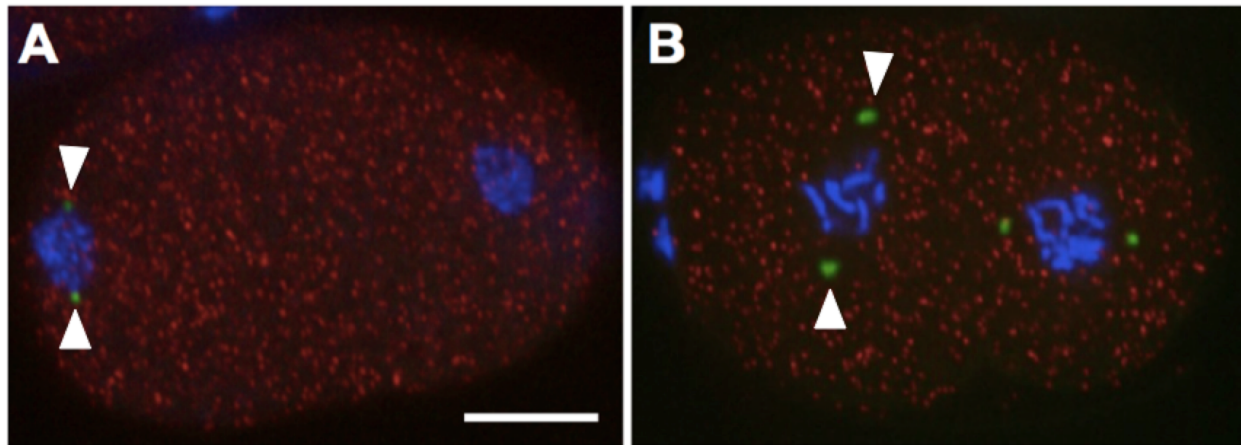


Localization of *tbg-1* mRNAs and GFP::TBG-1 protein in Early *C. elegans* Embryos

Lauren DeMeyer¹, and Mi Hye Song^{1,2}

1. Department of Biological Sciences, Oakland University, Rochester, MI 48309

2. Corresponding author: msong2@oakland.edu



Description:

tbg-1 encodes gamma-tubulin, a ubiquitous and highly conserved component of centrosomes in eukaryotic cells (Strome *et al*, 2001). Using smFISH we determined the localization of *tbg-1* transcripts (red). *tbg-1* transcripts are detected within distinct foci throughout the cytoplasm during both the first (A) and second (B) mitosis. *tbg-1* transcripts are not enriched at centrosomes or either blastomere. In contrast, GFP tagged *TBG-1* proteins (green signal; arrowheads) localize at centrosomes, as previously shown (Strome *et al*, 2001). Shown are projections from selected focal planes. Bar=10 μ m.

Reagents

RNA probes targeting *tbg-1* mRNAs (Quasar 670; red) were designed using Stellaris Probe Designer (Biosearch Technologies). smFISH was performed as described previously (Osborne-Nishimura *et al.*, 2015; Shaffer *et al.*, 2013). For hybridization, embryos were incubated with *tbg-1* RNA probes (Quasar 670) at 39°C for four hours in the dark. Following hybridization, the embryos were washed and mounted with DAPI containing (blue) medium. To visualize centrosome-associated *TBG-1* protein, we used transgenic strain that expresses GFP::*TBG-1* (TH27; Hannak *et al.*, (2002), green).

References

Hannak, E., Oegema, K., Kirkham, M., Gonczy, P., Habermann, B., and Hyman, A.A. (2002). The kinetically dominant assembly pathway for centrosomal asters in *Caenorhabditis elegans* is gamma-tubulin dependent. *J Cell Biol* 157, 591-602.

Ji, N and van Oudenaarden, A. (2012) Single molecule fluorescent in situ hybridization (smFISH) of *C. elegans* worms and embryos. *Wormbook*.

Osborne Nishimura E, Zhang JC, Werts AD, Goldstein B, Lieb JD (2015) Asymmetric Transcript Discovery by RNA-seq in *C. elegans* Blastomeres Identifies *neg-1*, a Gene Important for Anterior Morphogenesis. *PLoS Genet* 11(4): e1005117.

Shaffer, SM, Wu, MT, Levesque, MJ, Raj, A. (2013) Turbo FISH: A Method for Rapid Single Molecule RNA FISH. *PLoS One*. DOI: 10.1371/journal.pone.0075120.

08/23/2017 – Open Access

Strome S, Powers J, Dunn M, Reese K, Malone CJ, White J, Seydoux G, Saxton W. Spindle dynamics and the role of gamma-tubulin in early *Caenorhabditis elegans* embryos. *Mol Biol Cell*. 2001 Jun;12(6):1751-64. PubMed PMID: 11408582; PubMed Central PMCID: PMC37338.

Funding: This work was done under a grant [7R15GM11016-02 to MHS] from the National Institute of General Medical Sciences, and research Excellence Fund from the Center of for Biomedical Research at Oakland University.

New Findings: The first observation of *tbg-1* mRNA localization in early *C. elegans* Embryos.

Reviewed by [Andy Golden](#)

Received 08/18/2017, **Accepted** 08/23/2017. **Available** starting [WormBase](#) release WS262, **Published Online** 08/23/2017.

Copyright: © 2017. This is an open-access article distributed under the terms of the Creative Commons Attribution License, which permits unrestricted use, distribution, and reproduction in any medium, provided the original author and source are credited.

Citation: DeMeyer, L; Song, MH. (2017): Localization of *tbg-1* mRNAs and GFP::*TBG-1* protein in Early *C. elegans* Embryos. Micropublication: biology. Dataset. <https://doi.org/10.17912/W2CW8H>