

# Novel deletion alleles of a *C. elegans* gene C38D4.9, named as *tm4476* and *tm4561*

Sawako Yoshina<sup>1</sup>, Sayaka Hori<sup>1</sup>, Yuji Suehiro<sup>1</sup> and Shohei Mitani<sup>1</sup>

1. Department of physiology, School of medicine, Tokyo women's medical university, Shinjuku-ku, Tokyo, 162-8666, Japan

## Description:

We report *tm4476* and *tm4561* as novel alleles of C38D4.9 gene that is an ortholog of human METTL5 (methyltransferase like 5)<sup>1</sup>. Human METTL5 function has not been reported. The alleles were isolated from the comprehensive screening of gene deletions generated by TMP/UV<sup>2</sup>. In the screening, both the alleles were detected by nested PCR using the following primer sets, 5'-CCGCCTATATCATGGCGCTT-3' and 5'-GCTGGTAGTTGCCACCGCAT-3' for first round PCR and 5'-ACTATCGAAGCCGCGCTTCA-3' and 5'-AACCCCAACTCCGTCCCAT-3' for second round PCR. By Sanger sequencing, the 30 bp flanking sequences of the alleles *tm4476* and *tm4561* were identified as GTATGAGTTGGAGACTGTTTTAGGAGTTGA-(191 bp deletion)-GTACTCTTTAAAAGCGCACATCTTTCTGAA and TAATTGATATCGGATGTGGATGTGGAATGT-(309 bp deletion)-ATTTTCGGCTAAAAATCGTATTTGGGTAAT, respectively (Fig. 1). Based on the information about the splicing isoforms of C38D4.9 (WormBase<sup>3</sup> WS259), the second exon of C38D4.9 is deleted in *tm4476* and *tm4561*.

## Reagents

FX04476 *C38D4.9(tm4476)* III (Not outcrossed)

FX04561 *C38D4.9(tm4561)* III (Not outcrossed)

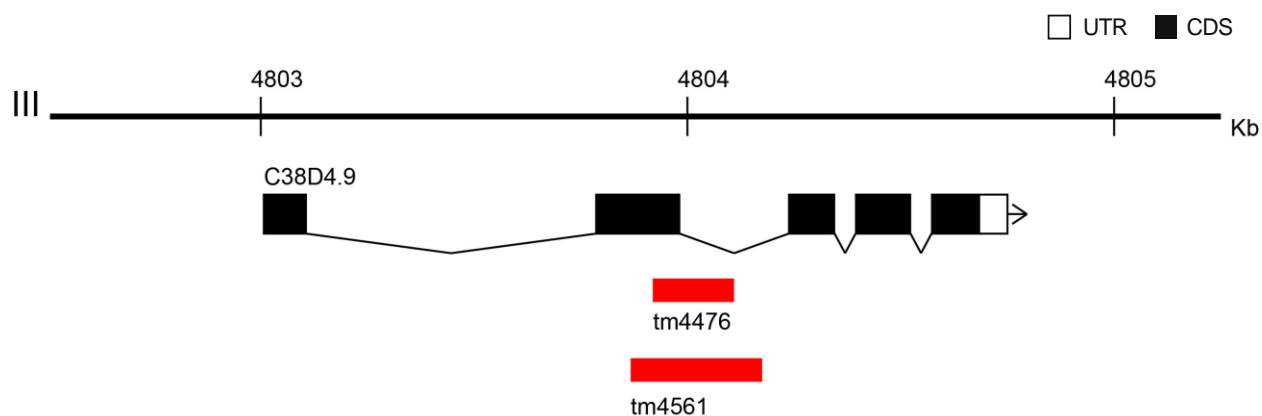


Fig. 1 Location of the novel alleles

## References

Shaye DD, Greenwald I. OrthoList: a compendium of *C. elegans* genes with human orthologs. PLoS One. 2011;6(5):e20085. doi: 10.1371/journal.pone.0020085. Epub 2011 May 25. PubMed PMID:21647448.

Gengyo-Ando K, Mitani S. Characterization of mutations induced by ethyl methanesulfonate, UV, and trimethylpsoralen in the nematode *Caenorhabditis elegans*. Biochem Biophys Res Commun. 2000 Mar 5;269(1):64-9. PMID: 10694478

Harris TW, et al. WormBase: a comprehensive resource for nematode research. Nucleic Acids Res. 2010 Jan;38(Database issue):D463-7. doi: 10.1093/nar/gkp952. Epub 2009 Nov 12. PubMed PMID:19910365.

## Funding:

The National BioResource Project.

10/03/2017 – Open Access

**Reviewed by** [Pei-Yin Shih](#)

**Received** 08/30/2017, **Accepted** 10/03/2017. **Available** starting WormBase release WS263, **Published Online** 10/03/2017.

**Copyright:** © 2017. This is an open-access article distributed under the terms of the Creative Commons Attribution License, which permits unrestricted use, distribution, and reproduction in any medium, provided the original author and source are credited.

**Citation:** Yoshina S; Hori, S; Suehiro, Y; Mitani, S. (2017): Novel deletion alleles of a *C. elegans* gene C38D4.9, named as tm4476 and tm4561. Micropublication: biology. Dataset. <https://doi.org/10.17912/W2HH32>