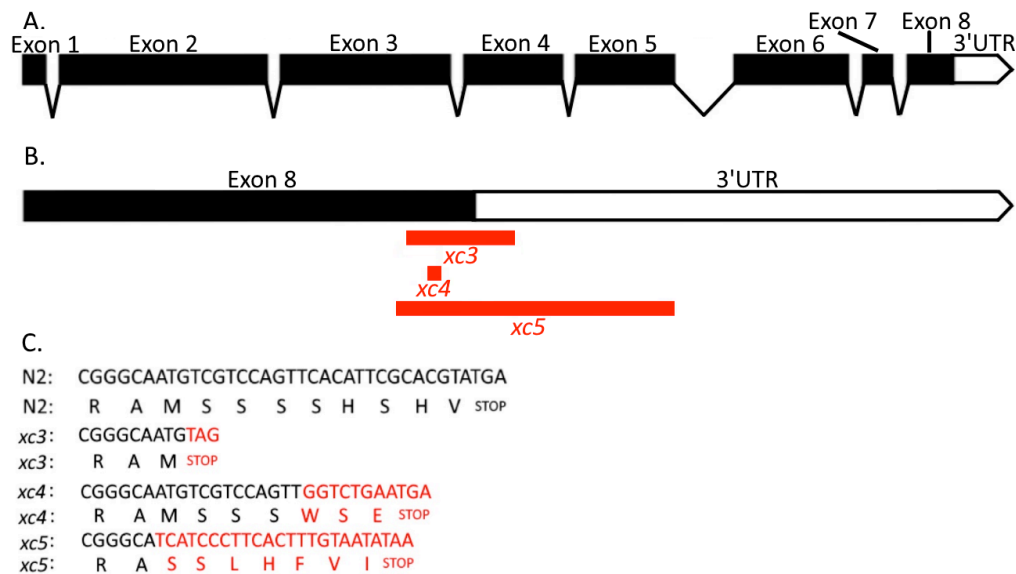


## New alleles of *C. elegans* gene *cls-2* (R107.6), called *xc3*, *xc4*, and *xc5*

Nicholas R. Munoz<sup>1</sup>, Christopher J. Black<sup>1</sup>, Ethan T. Young<sup>1</sup>, and Diana S. Chu<sup>1</sup>

<sup>1</sup>. Department of Biology, San Francisco State University, San Francisco, California 94132, USA



**Figure 1.** A. Map of exons, introns and the 3'UTR of *cls-2* (R107.6). B. The eighth exon and 3'UTR of *cls-2* (R107.6) with the position of the *xc3*, *xc4*, and *xc5* mutations indicated in red. C. Alignment of DNA and amino acid sequences in mutant and wildtype worms with mutations in red.

### Description:

We have generated novel mutant alleles, named *xc3*, *xc4*, and *xc5*, of the gene *cls-2* (R107.6) that encode one of the three predicted orthologs of mammalian CLASPs and of *Drosophila* ORBIT/MAST, microtubule-binding proteins (Akhmanova et al., 2001; Maiato et al., 2002). In *C. elegans* CLS-2 is required for meiosis and mitosis (Cheeseman et al., 2005; Dumont et al., 2010; Espiritu et al., 2012; Maton et al., 2015; Nahaboo et al., 2015). The alleles were isolated from gene mutations generated by Non-Homologous End Joining (NHEJ) mediated repair of Cas9-generated breaks (Dickinson et al., 2013; Ran et al., 2013). The alleles were detected by PCR using the following primers, 5'-CGATACGTCGGAGCAGAGC-3' and 5'-CGGGGTTCGAAAATCATAAGG-3'. Next Generation Sequencing allowed us to identify 30 bp flanking sequences of the alleles *xc3*, *xc4*, and *xc5* as TTGTCCAAGTCTACGTCAATCGGGCAATGT - [42 bp deletion] - AGCCATAAATCCCCCGTATTCGTATCCCA, TCTACGTCAATCGGGCAATGTCGTCCAGTT - [3 bp deletion, 41 bp insertion (GGTCTGAATGACTTTCGCACTATTCCTTATTCGCACGCCT)] - ATTCGACGTATGATTCGTTCGTTGCAATGT, and AACCTTGCCAAGTCTACGTCAATCGGGCA - [111 bp deletion] - TCATCCCTTCACTTTGTAATATAATTTTAT, respectively.

Based on information about *cls-2* (R107.6) (WormBase, <http://www.wormbase.org>, WS261), the *xc3*, *xc4*, and *xc5* mutant alleles effect the eighth exon and the 3'-UTR in the same way in each splicing isoform (Fig.1). In the *xc3* mutant, 16 bp of the 3'UTR is deleted and a new stop codon was introduced after an 8 amino acid deletion (SSSSHSHV) of the C-terminus of the protein. In *xc4* due to an insertion causing a frameshift mutation, 5 wildtype amino acids (SHSHV) from the C-terminus will be replaced by 3 amino acids (WSE). In *xc5* the endogenous stop codon is deleted as well as 81 bp of the 3'UTR, while a new stop codon is introduced 21 bp after the mutation. Because of the deletion and new stop codon, in the *xc5* mutant 9 amino acids (MSSSSHSHV) in the C-terminus of the protein will be replaced by 7 new amino acids (SSLHFVI). Previous researchers replaced serine residues with non-phosphorylatable alanine residues to study the effect of human CLASP2 phosphorylation (Kumar et al., 2017). The mutations we have generated have multiple serine residues deleted which presents a unique opportunity to study

the effect of *cls-2* (R107.6) phosphorylation. Since more of the 3'UTR is deleted in *xc5* than *xc3*, the 3'UTR's function could also be studied using these mutants.

### Reagents

Alt-R® CRISPR-Cas9 crRNA  
Alt-R® CRISPR-Cas9 tracrRNA  
Alt-R® S.p. Cas9 Nuclease

### Strains:

**XC125** *cls-2 (xc3) unc-119 (ed3) III; ieSi38 (IV)*  
**XC126** *cls-2 (xc4) unc-119 (ed3) III; ieSi38 (IV)*  
**XC127** *cls-2 (xc5) unc-119 (ed3) III; ieSi38 (IV)*

### References

- Akhmanova, A., Hoogenraad, CC., Drabek, K., Stepanova, T., Dortland, B., Verkerk, T., Vermeulen, W., Burgering, B. M., Zeeuw, D., Grosveld, F., & Galjart, N. (2001). Clasps are CLIP-115 and -170 associating proteins involved in the regional regulation of microtubule dynamics in motile fibroblasts. *Cell*, *104*, 923-35. doi:10.1016/S0092-8674(01)00288-4
- Cheeseman, IM., MacLeod, I., Yates, JR., Oegema, K., & Desai, A. (2005). The CENP-F-like proteins HCP-1 and HCP-2 Target CLASP to Kinetochores to Mediate Chromosome Segregation. *Current Biology*, *15*, 771-777. doi: 10.1016/j.cub.2005.03.018
- Dickinson, DJ., Ward, JD., Reiner, DJ., & Goldstein, B. (2013). Engineering the *Caenorhabditis elegans* genome using Cas9-triggered homologous recombination. *Nature Methods* *10*, 1028-1034. doi:10.1038/nmeth.2641
- Dumont, J., Oegema, K., & Desai, A. (2010). A kinetochore-independent mechanism drives anaphase chromosome separation during acentrosomal meiosis. *Nature Cell Biology* *12*, 894-901. doi: 10.1038/ncb2093
- Espiritu, EB., Krueger, LE., Ye, A., & Rose, LS. (2012). CLASPs function redundantly to regulate astral microtubules in the *C. elegans* embryo. *Elsevier*, *368*, 242-254. doi: 10.1016/j.ydbio.2012.05.016
- Kumar, P., Lyle, KS., Gierke, S., Matov, A., Danuser, G., & Wittmann, T. (2017). GSK3 $\beta$  phosphorylation modulates CLASP-microtubule association and lamella microtubule attachment. *J Cell Biol*, *184*, 895-908. doi:10.183/jcb.200901042
- Maiato, H., Sampaio, P., Lemos, CL., Findlay, J., Carmena, M., Earnshaw, WC., & Sunkel, CE. (2002). MAST/Orbit has a role in microtubule-kinetochore attachment and is essential for chromosome alignment and maintenance of spindle bipolarity.. *J Cell Biol*, *157*, 749-60. doi:10.1083/jcb.200201101
- Maton, G., Edwards, F., Lacroix, B., Stefanutti, M., Laband, K., Lieury, T., Kim, T., Espeut, J., Canman, JC., & Dumont, J. (2015). Kinetochore components are required for central spindle assembly. *Nature Cell Biology* *17*, 697-705. doi:10.1038/ncb3150
- Nahaboo, W., Melissa, Z., Askjaer, P., & Delattre, M. (2015). Chromatids segregate without centrosomes during *Caenorhabditis elegans* mitosis in a Ran- and CLASP-dependent manner. *MBoC* *26*, 2020-2029. doi:10.1091/mbc.e14-12-1577
- Ran, FA., Hsu, PD., Wright, W., Agarwala, V., Scott, D., & Zhang, F. (2013). Genome engineering using the CRISPR-Cas9 system. *Nature News*, 2281-2308. doi:10.1038/nprot.2013.143

### Funding:

NSF RUI 1244517, NIH R15 HD068996

**Reviewed by** Andrea Kalis

**Received** 12/06/2017, **Accepted** 12/08/2017. **Available** starting WormBase release WS264, **Published Online** 12/19/2017.

**Copyright:** © 2017. This is an open-access article distributed under the terms of the Creative Commons Attribution License, which permits unrestricted use, distribution, and reproduction in any medium, provided the original author and source are credited.

**Citation:** Munoz, NR; Black, CJ; Young, ET; Chu, DS. (2017): New alleles of *C. elegans* gene *cls-2* (R107.6), called *xc3*, *xc4*, and *xc5*. Micropublication: biology. Dataset. <https://doi.org/10.17912/W2RQ2X>